

## Main products

5904611903

## Spare part list

191320 - 0134 - HP1200S/HP1800S - -

Spare	Description	additional	Item	Abb.	ConstructStatus
02093384	Hexagon bolt	M10x25 DIN 933	1	A	*
02012708	spring washer	A10	2	A	*
3903704009	washer part 73		3	A	*
5904610009	Driven pulley		4	A	*
02093366	screw	M8x25, 8.8, verzinkt, DIN933	6	A	*
02012506	washer	Ø8,4 / Ø16 x 1.6, Form A, verzinkt. DIN125	7	A	*


**Main products**
**Spare part list**

5904611903

191320 - 0134 - HP1200S/HP1800S - -

Spare	Description	additional	Item	Abb.	ConstructStatus
305RP7512	shaft sealing ring part 12 (10002612)	TC 35x48x7	9	A	*
5904610001	paper cushion + paper cushion of case cover		10, 15	A	*
305RP7514	bearing part 14 (10002614)		11	A	*
5904610010	Base plate		13	A	*
02098507	Sechskantmutter selbstsichernd	M12	16	A	*
02902110	washer	A13 / Ø37 / Ø13,3 x 3	17	A	*
02902110	washer	A13 / Ø37 / Ø13,3 x 3	18	A	*
02093164	hexagon bolt	M12x70 DIN 931	19	A	*
5904608008	shock absorber for vibrating plate		19	A	*
02093164	hexagon bolt	M12x70 DIN 931	20	A	*
02144007	washer	12 ST 1440 VZ	21	A	*
5904608020	liner for handle part 34		22	A	*
5904608005	rubber coupling for handle part 35		23	A	*
02098507	Sechskantmutter selbstsichernd	M12	24	A	*
5904610002	foldable handle lower		25	A	*
5904608015	throttle cable and lever assy	Ø5x1080	26	A	*
3908301099	throttle lever		26-1	A	*
5904608022	bend head screw for handle part 27		27	A	*
5904611002	upper handle with rubber ring		28	A	nur für HP1800S
5904610003	foldable handle upper		28	A	nur für HP1200S
5904608023	bend washer 10 part 26		29	A	*
5904608019	plum nut for foldable handle part 25		30	A	*
5904610004	rubber coupler for handle		31	A	*
02093370	hexagonal screw	M8x45 DIN 933	33	A	*
5904610005	belt A686	13x686 Li / A27	34	A	nur für HP1200s


**Main products**
**Spare part list**

5904611903

191320 - 0134 - HP1200S/HP1800S - -

Spare	Description	additional	Item	Abb.	ConstructStatus
5904611001	belt 13x712 Li	XPA 757(712)x13x9	34	A	nur für HP1800s
5904608014	clutch assy Ø19.5 part 8	Ø129 x 46,5	35	A	*
5911235015	feather key		36	A	*
02902108	washer	A8Ø23/8x2	37	A	*
02012707	spring washer	Ø8,1 / Ø14,8 x 4,6 From A8, verzinkt, DIN127	38	A	*
5904608002	hex bolt fine pitch threat	M8x25	39	A	*
5904610006	protective frame		40	A	*
02012507	washer	A10,5 ST 125 VZ	41	A	*
02012708	spring washer	A10	42	A	*
02093385	Hexagon bolt	M10x30 DIN 933	43	A	*
05007101	rachet nut	M8-W193 10 VERBUSRIPP VZ	44	A	*
02091247	cheese head screw	M8x20 8.8 912 VZ	46	A	*
5904610007	belt cover		47	A	*
02093405	hexagon nut M8	M8	49	A	*
02093372	hex bolt	M8x55 DIN 933	50	A	*
3905201030	washer	14mm	52	A	*
5904608012	oil plug		53	A	*
5904608021	wheel assy		54	A	*
5904608009	wheel part 47		54-2	A	*
02144009	washer	16 ST 1440 VZ	54-3	A	*
01047114	circlip ring A 17x1,0 FEDST 471 BK	A 17x1.0	54-4	A	*
7904601701	rubber mat HP2000S scheppach		55	A	Nur HP1800s
5904610008	rubber mat		55	A	Nur HP1200s
02093368	Hexagon bolt	M8x35 DIN 933	56	A	*
02098505	nut	M8, verzinkt, DIN985	57	A	*



5904611903

Plate compactor  
HP1800S scheppach -  
6.5HP



**Main products**

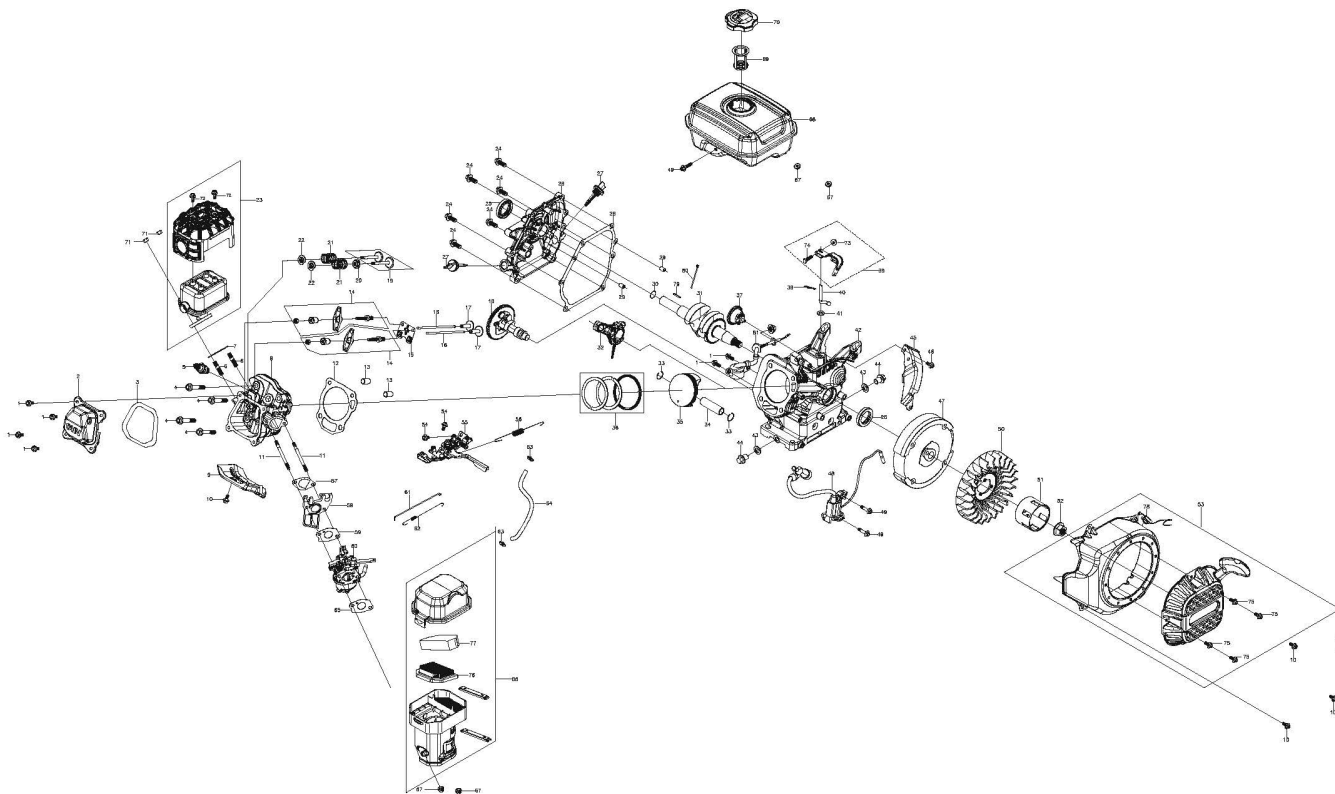
**Spare part list**

5904611903

191320 - 0134 - HP1200S/HP1800S - -

Spare	Description	additional	Item	Abb.	ConstructStatus
02902108	washer	A8Ø23/8x2	für 56	A	*
3904601093	sparkign plug key with pin		o.Abb.	A	*

!!! Do you know: From now on you can view spare parts lists in our spare parts shop and order spare parts and accessories directly. More information can be found here: <https://www.scheppach.com/Shop.aspx>



## Main products

## Spare part list

5904611903

191320 - 0134 - HP1200S/HP1800S/HP2200S Motor H200 - -

Spare	Description	additional	Item	Abb.	ConstructStatus
3904601177	packing, head cover pc13 part E8		3	A	*
3904601090	sparkign plug	F7RTC	5	A	*
3908301325	gasket muffler part 27		7	A	*
5904610011	Camshaft assy		18	A	*
5904610012	muffler		23	A	*
5904610013	Oil seal	Øa. 41,25 / Øi. 25 x 6	25	A	*
5904610026	Oil rule combination		27	A	*
5904610014	Crankcase cover gasket	178 x 172 x 0,7	28	A	*
5904610015	crankshaft		31	A	*


**Main products**
**Spare part list**

5904611903

191320 - 0134 - HP1200S/HP1800S/HP2200S Motor H200 - -

Spare	Description	additional	Item	Abb.	ConstructStatus
5904610016	Piston		35	A	*
5904610017	Piston ring combination	Øa.78 / Øi. 73 x 1 / x 0,4 / x 1,95	36	A	*
5904610018	FLYWHEEL COMP		47	A	*
5904610019	COIL ASSY.,IGNNTION		48	A	*
3908301348	fan cooling part 76		50	A	*
5904610027	Manual starting assembly		53	A	*
3904601088	starter assy.	Ø175x41	53-1	A	*
3908301363	spring throttle return		56	A	*
3906203076	gasket		57	A	*
5906202008	gasket carburetor		59	A	*
3904602030	carburetor	Ø19	60	A	*
3908301362	rod govener cpl.		61,62	A	*
5904610020	Carburetor gasket	57 x 41 x 0,6	65	A	*
5904610021	Air filter assy		66	A	*
3904601190	fuel filter	M10 x 1,25	66.1	A	*
5904610028	Tank		68	A	*
5904610022	Pouring orifice filter screen combination	Ø48	69	A	*
3904604055	fuel tank cap	Ø73x20	70	A	*
3908301364	bolt, flange	M6x8	75	A	*
5904610023	Air filter element		76	A	*
5904610024	Air filter element		77	A	*
3904601091	On/Off switch	Loncin G200F EURO5	78	A	*
5904610025	Oil level sensor		81	A	*

!!! Do you know: From now on you can view spare parts lists in our spare parts shop and order spare parts and accessories directly. More information can be found here: <https://www.scheppach.com/Shop.aspx>